

**GROUND FLOOR PLAN
POLISH CLUB/ PARKING LEVEL P-1**


 NORTH
 SCALE: 1/16" = 1'-0"
 EL = +0'-0"/-3'-0"
 1

EAST 333.75' (P) (P.B. 66, PG. 68)

EAST 330' (D) EAST 339.61' (C)
 EAST P/L 299.61' (C) 299' (R)

(FROM THE CORNER OF TRACT A TO THE LOW
 MIAMI RIVER AS PER P.B. 66, PG. 21)
 678' ±
 N00°42'37"E (C) P/L ±257.15' (D)
 296' ± TO EDGE OF WATER

N00°44'00"E (C) R/W ±272.08' (C)

N.W. 22nd AVENUE
ST ASPHALT PARKING

(STATE ROAD No. 813)

SCHINDLER ARCHITECTS
 7270 NW 12th Street, Suite 800
 Miami, Florida 33126
 305-471-1120
 info@schindlerarchitects.com
 AA - 0003194

PROJECT NUMBER

OWNER

HEADQUARTERS
 POLISH AMERICAN CLUB, INC.
 1250 NW 22nd Avenue
 Miami-Dade County, Florida 33125

PROJECT NAME

REVISIONS		
NO.	DESCRIPTION	DATE
1	REVISED	DATE
2	REVISED	DATE
3	REVISED	DATE
4	REVISED	DATE
5	REVISED	DATE
6	REVISED	DATE

SEAL / SIGNATURE

Subcontractor
 THE SUBCONTRACTOR OF THE STRUCTURE DESCRIBED HEREIN OR A COPYRIGHT © 2008 under the laws of the United States of America. Use of the document is granted by the registered license holder. Any use not be modified or duplicated without the express consent of Schindler Architects. Failure to comply with the Schindler Architects full and irrevocable void that license and all rights to use this document and the information herein.

THESE ARE
**GROUND FLOOR PLAN
 POLISH CLUB
 PARKING LEVEL P-1**

SHEET NUMBER
A-1
 1 OF 13



PROJECT NUMBER

OWNER

HEADQUARTERS
POLISH AMERICAN CLUB, INC.
1250 NW 22nd Avenue
Miami-Dade County, Florida 33125

PROJECT NAME

REVISIONS		
NO	DESCRIPTION	DATE
1	2008 STUDY	8/11/08
2	2008 STUDY	8/26/08
3		
4		
5		
6		

SEAL / SIGNATURE

subconsultant
The documents and the structure described herein are copyright(2008) under the laws of the United States of America. Use of the document is granted by the registered license holder. It may not be reprinted or duplicated without the expressed consent of Schindler Architects. Failure to comply with Schindler Architects Terms and Conditions will automatically void this license and all rights to use this document and the information herein.

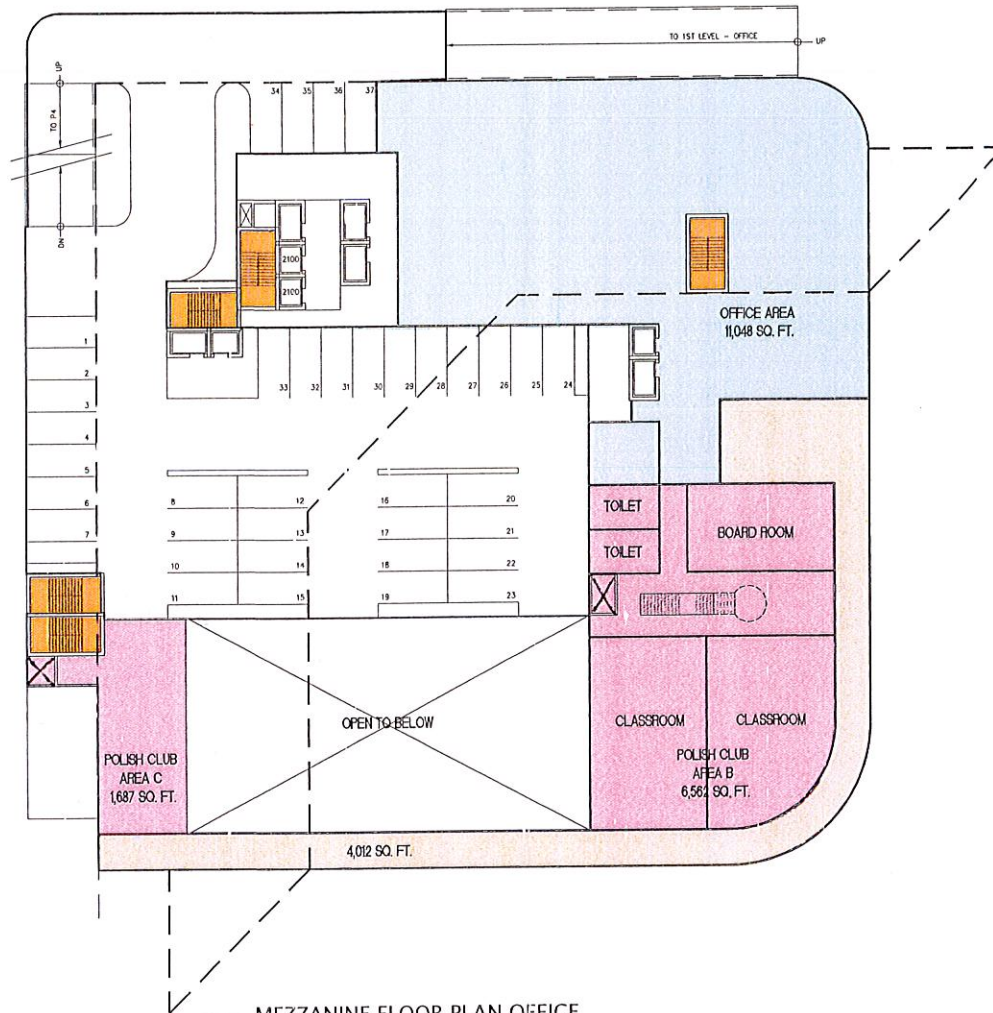


SHEET TITLE
MEZZANINE FLOOR PLAN
OFFICE
PARKING LEVEL P-3

SHEET NUMBER

A-3

2 OF 13

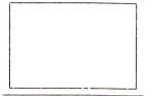


**MEZZANINE FLOOR PLAN OFFICE
PARKING LEVEL P-3**

NORTH

SCALE: 1/16" = 1'-0" EL = + 14'-0"

1



PROJECT NUMBER

OWNER

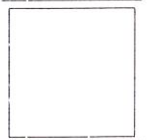
HEADQUARTERS
POLISH AMERICAN CLUB, INC.
1250 NW 22nd Avenue
Miami-Dade County, Florida 33125

PROJECT NAME

REVISIONS		
NO.	DESCRIPTION	DATE
1	Issue/Study	JAN 20/02
2		
3		
4		
5		
6		

SCALE / SIGNATURE

subconsultant
The drawings and the work are copyrighted (2002) under the laws of the United States of America. Use of this document is granted by the registered license holder. It may not be modified or distributed without the explicit consent of Schindler Architects. Failure to comply with Schindler Architects' Terms and Conditions may result in legal action. It is the user's responsibility to use this document and the information herein.

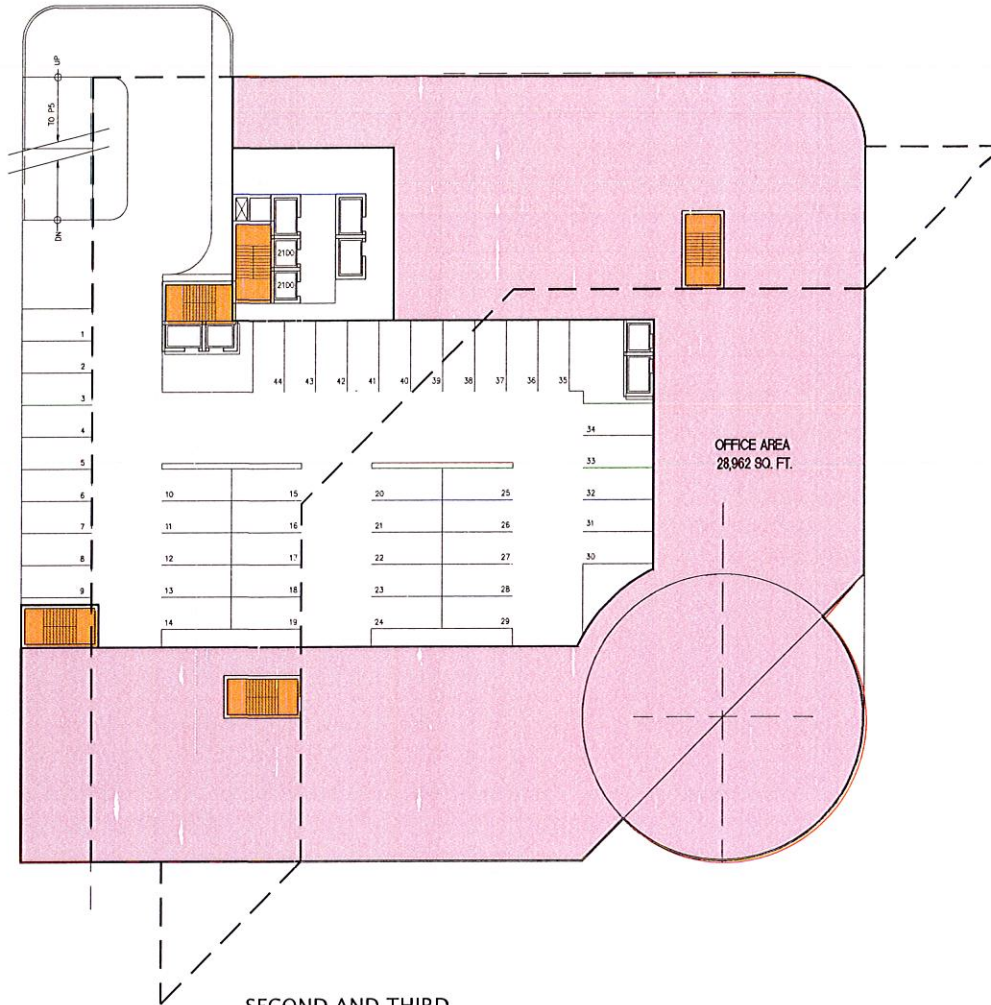


SHEET TITLE
SECOND AND THIRD
FLOOR PLAN
TYPICAL OFFICE

SHEET NUMBER

A-3

3 OF 8



SECOND AND THIRD
FLOOR PLAN TYPICAL OFFICE

SCALE: 1/16" = 1'-0" EL = +25'-4"

1

PROJECT NUMBER

OWNER

PROJECT NAME
**HEADQUARTERS
 POLISH AMERICAN CLUB, INC.**
 1250 NW 22nd Avenue
 Miami-Dade County, Florida 33125

REVISIONS		
NO.	DESCRIPTION	DATE
1	Zoning Study	JAN-21-2012
2		
3		
4		
5		
6		

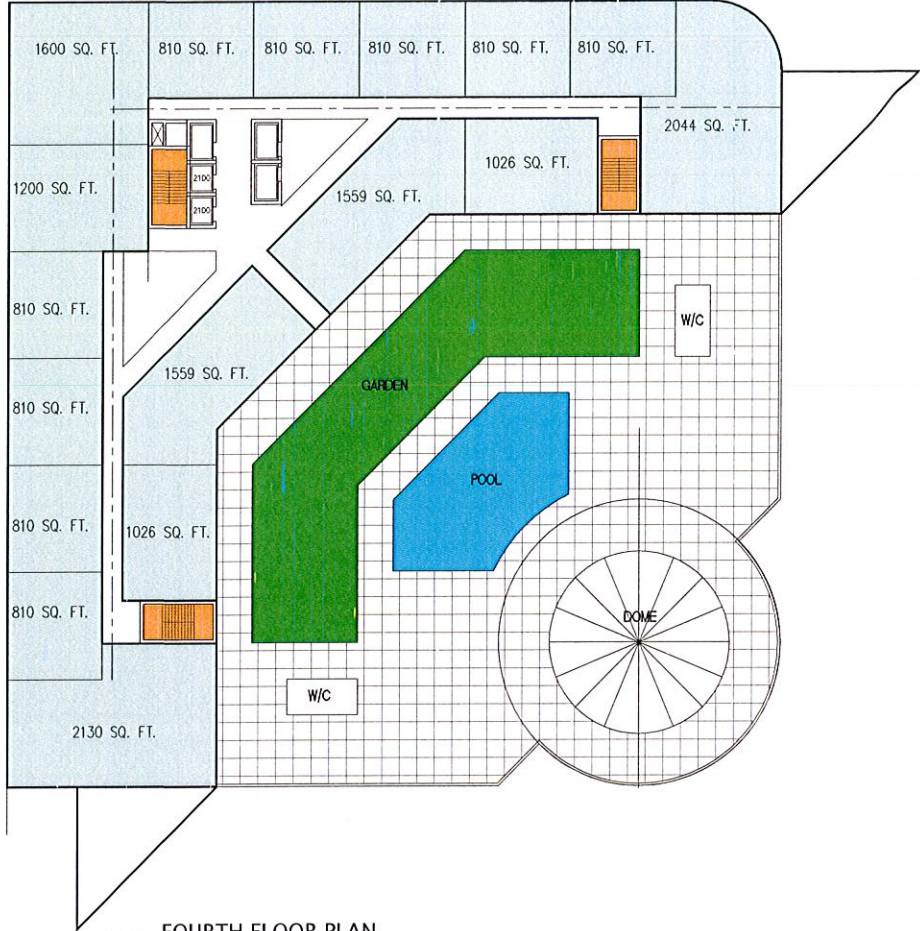
SCALE / SIGNATURE

subconsultant
 The Consultant and the structure described herein are copyright © 2009, under the laws of the United States of America. Use of this document is granted by the registered license holder. It may not be modified or re-distributed without the expressed consent of Schindler Architects. Failure to comply with Schindler Architects may result in legal action and all rights to use this document and all information herein.

SHEET TITLE

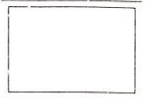
**FOURTH FLOOR PLAN
 RESIDENTIAL TOWER
 POOL DECK**

SHEET NUMBER
A-4
 4 OF 8



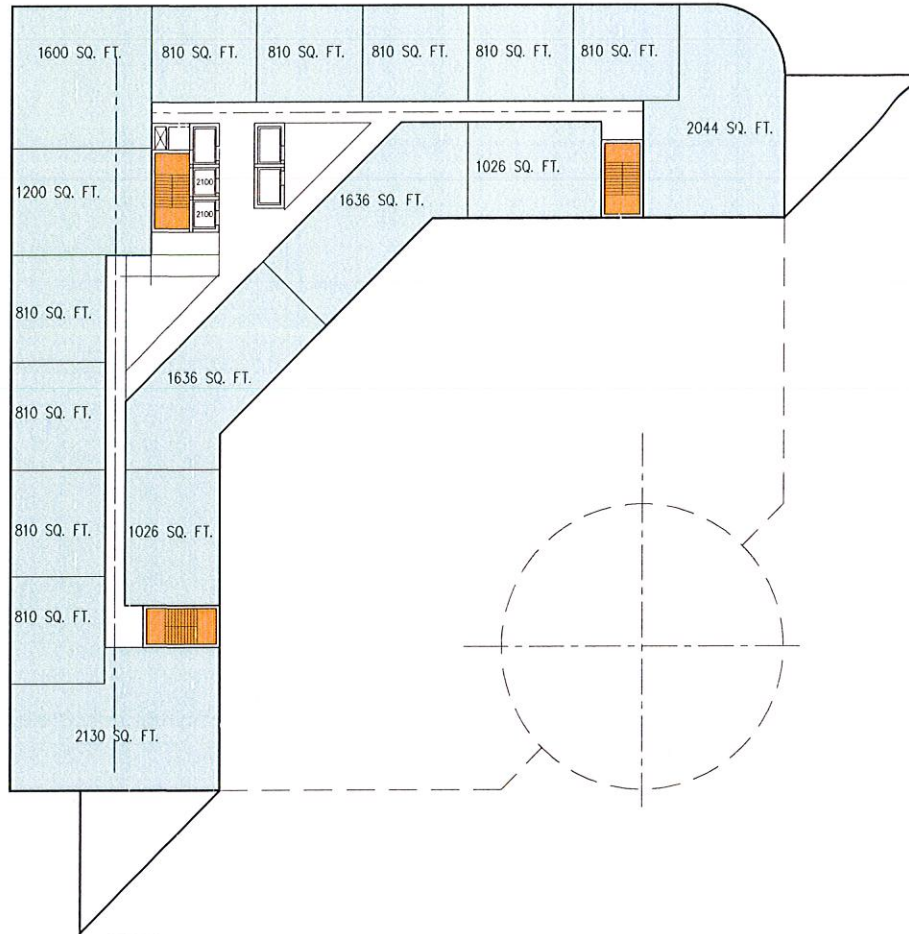
**FOURTH FLOOR PLAN
 RESIDENTIAL TOWER/ POOL DECK**

NORTH 0 8' 16' 32' SCALE: 1/16" = 1'-0" EL = + 48'-0" 1



PROJECT NUMBER

OWNER



TYPICAL RESIDENTIAL FLOOR PLAN (5 TO 12) ①

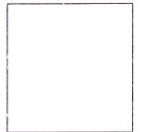
SCALE: 1/16" = 1'-0" EL. = +57'-6" TO +124'-0"

PROJECT NAME
HEADQUARTERS
POLISH AMERICAN CLUB, INC.
1250 NW 22nd Avenue
Miami-Dade County, Florida 33125

REVISIONS		
NO.	DESCRIPTION	DATE
1	ZONING STUDY	JAN-20-2022
2		
3		
4		
5		
6		

SEAL / SIGNATURE

subconsultant
This document and the drawings described herein are the copyrighted work of the author. Use of this document is granted to the registered licensee holder. It may not be modified or published without the expressed consent of Schindler Architects. Failure to comply with Schindler Architects may result in immediate voiding of license and all rights to use the information of the information herein.



SHEET TITLE
TYPICAL RESIDENTIAL
FLOOR PLAN
(5 TO 12)

SHEET NUMBER

A-5

5 OF 8



PROJECT NUMBER

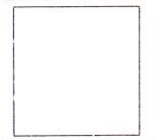
OWNER

PROJECT NAME
**HEADQUARTERS
 POLISH AMERICAN CLUB, INC.**
 1250 NW 22nd Avenue
 Miami-Dade County, Florida 33125

REVISIONS		
No.	DESCRIPTION	DATE
1	DOING STUDY	JAN 21, 2012
2		
3		
4		
5		
6		

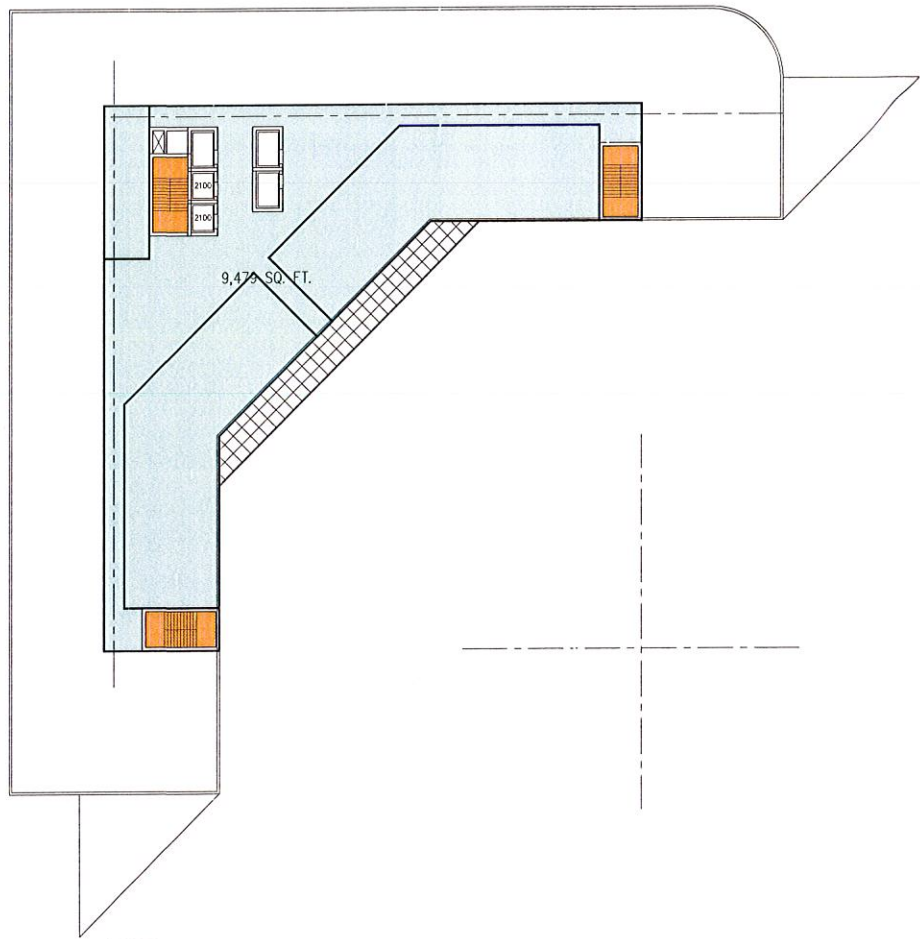
SEAL / SIGNATURE

disclaimer
 This document is the property of Schindler Architects, Inc. and is copyrighted (2012) under the laws of the United States of America. Use of this document is granted by the registered license holder. It may not be modified or duplicated without the expressed consent of Schindler Architects, Inc. For more information, please contact Schindler Architects, Inc. at 7270 NW 12th Street, Suite 850, Miami, FL 33126. All rights reserved.



SHEET TITLE
**ROOF DECK/
 PENTHOUSE
 FLOOR PLAN**

SHEET NUMBER
A-6
 6 OF 8



ROOF DECK/ PENTHOUSE FLOOR PLAN ①
 NORTH 0 4' 8' 16' 32' SCALE: 1/16" = 1'-0" EL = +133'-6"

PROJECT NUMBER

DATE

PROJECT NAME
**HEADQUARTERS
 POLISH AMERICAN CLUB, INC.**
 1250 NW 22nd Avenue
 Miami-Dade County, Florida 33125

REVISIONS

No.	DESCRIPTION	DATE
1	ISSUED FOR PERMITS	04-20-2012
2		
3		
4		
5		
6		

SEAL / SIGNATURE

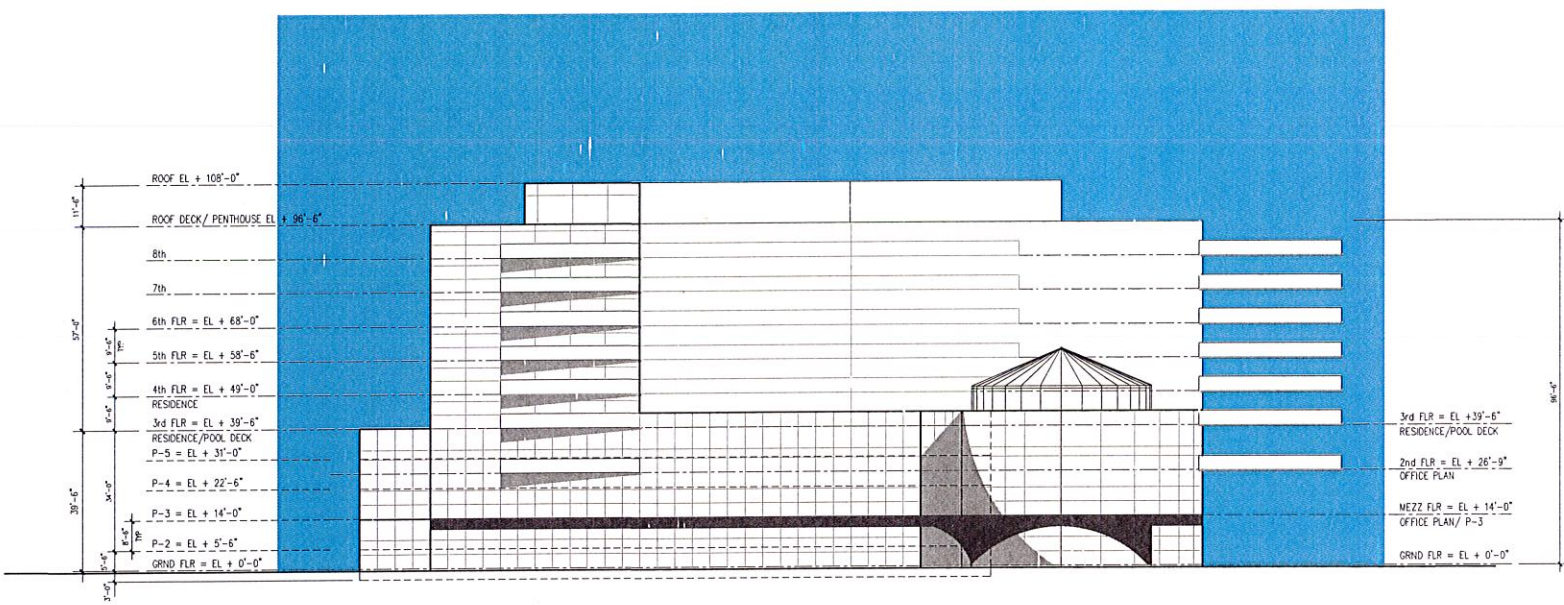
Subcontractors
 This document and the structure depicted herein are copyrighted 2009 under the laws of the United States of America. Use of this document is granted by the registered license holder. It may not be modified or duplicated without the express consent of Schindler Architects. Failure to compensate Schindler Architects may result in legal action and the right to use the document and the information herein.

SHEET TITLE

SOUTH EXTERIOR ELEVATION

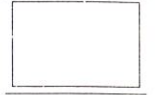
SHEET NUMBER

A-7
 7 OF 8



SOUTH ELEVATION

SCALE: 1/16" = 1'-0"



PROJECT NUMBER

DATE

PROJECT NAME
 HEADQUARTERS
 POLISH AMERICAN CLUB, INC.
 1250 NW 22nd Avenue
 Miami-Dade County, Florida 33125

REVISIONS		
No.	DESCRIPTION	DATE
1	ISSUING STUDY	JAN 20/2012
2		
3		
4		
5		
6		

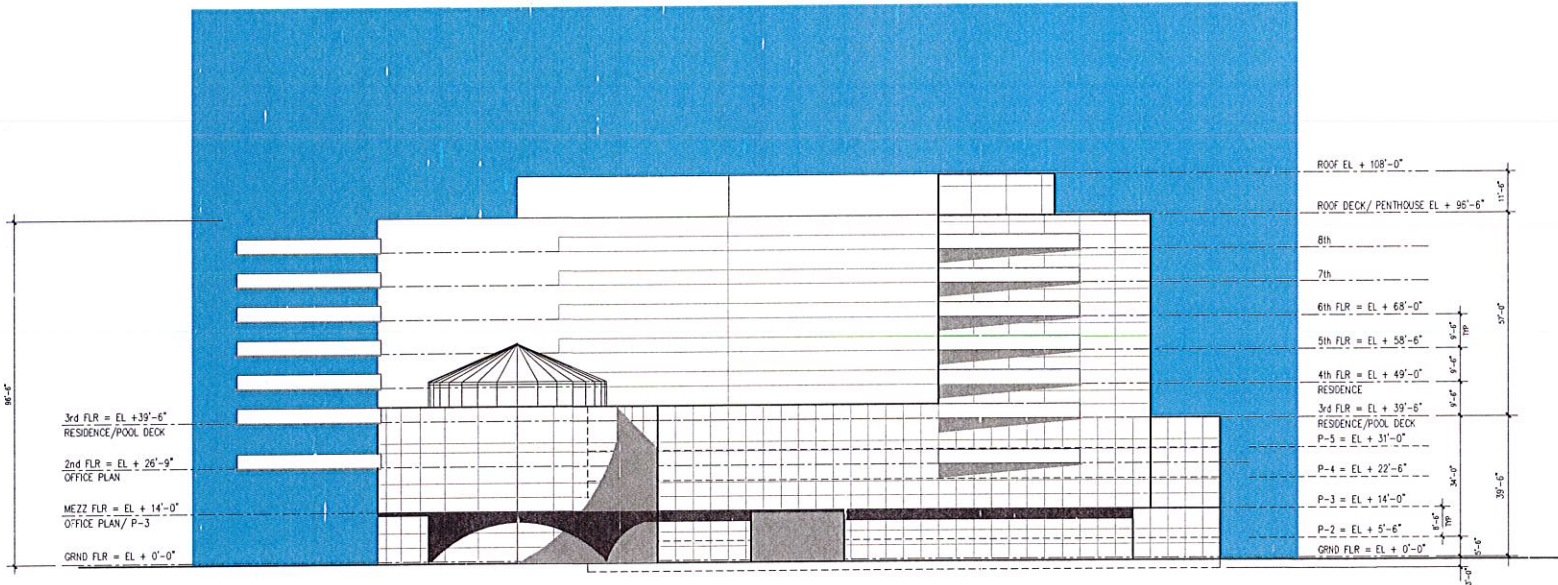
SEAL / SIGNATURE

Disclaimer
 This document is the property of Schindler Architects, Inc. and is not to be distributed, copied, or reproduced in any form without the written consent of Schindler Architects, Inc. It is to be used only for the project and site for which it was prepared. It is not to be used for any other project or site without the written consent of Schindler Architects, Inc.



SHEET TITLE
 EAST EXTERIOR
 ELEVATION

SHEET NUMBER
A-8
 8 OF 8



EAST ELEVATION

SCALE: 1/16" = 1'-0"

1

POLISH CLUB 8 - AREAS

			PARKING SPACES	PARKING S.F.	OFFICE S.F.	RESIDENCE S.F.	CIRCULATION S.F.	RETAIL S.F.	POLISH CLUB/S.F.	GROSS S.F.	
1	SP-1	SITE PLAN								9420	
2	A-1	GROUND FLOOR PLAN PARKING LEVEL P-1	76	37,849						28429	51,792
		RETAIL AREA						6,490			
		POLISH CLUB AREA							12,418		
		LOBBY ENTRANCE AREA					3,327				
		RIVERWALK AREA					4,493				
3	A-2	PARKING LEVEL PLAN P-2	37	11,794							15,991
4	A-3	MEZZANINE FLOOR PLAN OFFICE LEVEL P-3	33	15,166							53,678
		OFFICE AREA			11,048						
		POLISH CLUB AREA							8,249		
5	A-4	TYPICAL PARKING LEVEL P-4/ P-5/ P-6									21,877
		P-4	33	20,618							
		P-5	33	20,618							21,877
6	A-5	SECOND FLOOR PLAN OFFICE	0	20,618							53,300
		OFFICE AREA			28,962						
8	A-8	THIRD FLOOR PLAN RESIDENTIAL TOWER POOL DECK									47,625
		RESIDENTIAL AREA - 17 UNITS				19,435	14,143				
		CIRCULATION COMMON AREA					5,079				
		TRIANGLE BALCONY EA. 800 SF					1,600				
		POOL AREA					1,768				
		GREEN AREA					4,543				
9	A-9	TYPICAL RESIDENTIAL FLOOR PLAN (4 TO 8 = 5 FLRS)									196,112
		19,588				97,940					24,514 EACH FLOOR
		4,926					24,630				
		1,600					8,000				
		RESIDENTIAL AREA - 17 UNITS EACH FLOOR									
		CIRCULATION COMMON AREA									
		TRIANGLE BALCONY EA. 800 SF									
10	A-10	RESIDENTIAL PENTHOUSE FLOOR PLAN									10,761
		RESIDENTIAL AREA				9,479					
		CIRCULATION COMMON AREA					1,330				
		BALCONY AREA					949				
11	A-11	SOUTH EXTERIOR ELEVATION									
12	A-12	EAST EXTERIOR ELEVATION									
		TOTALS	212	126,663	40,010	126,854	69,862		20,667		473,013 SF